



CGM LYTEC MD System Requirements

December 2022

CGM LYTEC

Practice Management and EHR

Copyright notice

Copyright © 2022 eMDs, a brand of CompuGroup Medical. All Rights Reserved.

Use of this documentation and related software is governed by a license agreement and this document is incorporated into and is made part of the license agreement. This documentation and related software contain confidential, proprietary, and trade secret information of eMDs, a brand of CompuGroup Medical, and is protected under United States and international copyright and other intellectual property laws. Use, disclosure, reproduction, modification, distribution, or storage in a retrieval system in any form or by any means is prohibited without the prior express written permission of eMDs, a brand of CompuGroup Medical. This documentation and related software is subject to change without notice.

Publication date

December 2022

Product

CGM Lytec 2023

Corporate address

eMDs, Inc.
10901 Stonelake Blvd.
Austin, Texas 78759
512-257-5200

CGM LYTEC MD 2023 Hardware and Software Requirements

This guide identifies the hardware and software requirements for CGM LYTEC MD 2023.

Application Server

The following table lists the hardware requirements for application servers.

CPU (Processor)	Intel Dual Core Xeon 2.0GHz
RAM (Memory)	4GB
Storage Array Type	RAID-5 or SAN
Network Card (NIC)	1Gbps

For smaller customers, these specifications will support up to 10 thin client users and the CGM LYTEC MD application folder.

Database Server (SQL)

The following table lists the hardware requirements for SQL database servers.

CPU (Processor)	Dual Intel Quad Core Xeon 2.0GHz
RAM (Memory)	8GB (16GB for 300-1000 users; 32GB for 1000+ users)
Storage Array Type	RAID-1 and RAID-10 or SAN
Network Card (NIC)	1Gbps

SQL servers require multiple RAID arrays. One array is for the database files; the other is for either transaction logs (SQL). eMDs recommends a third array for the operating system.

These specifications are for a single production database. Additional databases (testing, training, production) require, at a minimum, an increase in RAM. Contact eMDs Support for further information.

For SQL Server 2019 on Windows

SQL Server 2019 is NOT supported on Windows 8.1 or Windows Server 2012 or Windows Server 2012 R2.

For information on which versions of SQL Server are supported on versions of Windows Server and Windows, see <https://learn.microsoft.com/en-us/troubleshoot/sql/general/use-sql-server-in-windows>

Server Operating System - Supported

- Windows Server 2012 (64 Bit) and R2 (Microsoft support end of life is October 10, 2023)
- Windows Server 2016 (64 Bit), Datacenter, Essentials

- Windows Server 2019 Standard
- Windows 11 Pro/Enterprise (Windows 11 Home is NOT supported)

Network - Recommended

Consult with a licensed network vendor for proper wiring for your business computing environment. Wireless networks are not recommended. If a wireless network is the only option, 2023 requires the use of Terminal Services/RDP/ Thin Clients and does not support a direct connected wireless workstation.

Internet - Required

High-speed Cable, DSL, or Satellite Internet service.

Microsoft SQL Database - Supported

- Microsoft SQL 2019**
- Microsoft SQL 2017

*CGM LYTEC Client/Server will continue to use Microsoft SQL 2012 if it is already installed; however, certain new CGM LYTEC features will not work with SQL 2012. SQL 2012 is no longer supported by Microsoft nor CGM so it must be upgraded. To upgrade SQL it will need to be purchased and installed separately.

**For SQL Server 2019 on Windows

SQL Server 2019 is NOT supported on Windows 8.1 or Windows Server 2012 or Windows Server 2012 R2.

For information on which versions of SQL Server are supported on versions of Windows Server and Windows, see <https://learn.microsoft.com/en-us/troubleshoot/sql/general/use-sql-server-in-windows>

Workstation Hardware - Required

The following table lists the hardware requirements for workstations.

CPU (Processor)	Intel Dual Core 1.6GHz (1.0GHz for tablets)
RAM (Memory)	8GB
Storage Space available	8GB*
Network Card (NIC)	100Mbps (or 802.11g for wireless)
Display Monitor	1024x768 (1200x800 for widescreen displays)

Workstation Hardware - Recommended

CPU Type	Core 2 2.4GHz or faster
RAM (Memory)	8GB
Storage Space available	8GB*
Network Card (NIC)	1Gbps
Display Monitor	1024x768 (1280x800 for widescreen displays)

*Your database will grow as you add data to your practice, increasing the amount of space needed on the hard drive.

Workstation Operating System - Supported

- Windows 10 Professional, Enterprise (NOT Home or S)
- Windows 11 Pro/Enterprise (Windows 11 Home is NOT supported)

CGM LYTEC MD 2023 Supported Operating Systems

OPERATING SYSTEM	SERVER	WORKSTATION	DATABASE
	Version of CGM LYTEC 2023	Version of CGM LYTEC 2023	Version of SQL***
	Client/Server	Client/Server	SQL Server 2017 Standard Edition
Windows Server 2012 and R2**, Windows Server 2016 Standard, Datacenter, Essentials, Windows Server 2019 Standard	Y	Y	Y
Windows 10 Professional, Enterprise*	N/A	Y	N

*CGM LYTEC MD is NOT supported for Windows 10 Home version for Patient Records and Medical Billing. Windows 10 S is NOT supported.

**Microsoft support end of life is October 10, 2023

*****For SQL Server 2019 on Windows**

SQL Server 2019 is NOT supported on Windows 8.1 or Windows Server 2012 or Windows Server 2012 R2.

For information on which versions of SQL Server are supported on versions of Windows Server and Windows, see <https://learn.microsoft.com/en-us/troubleshoot/sql/general/use-sql-server-in-windows>

For a complete list of all system requirements for CGM LYTEC MD, see CGM LYTEC MD System Requirements in the System Administration and System Requirements section of the CGM LYTEC 2023 Documentation page in Salesforce.

Revenue Management

Revenue Management uses Advantage Local Server. Advantage Local Server is limited to a maximum of five concurrent users. If you want to have more than five users accessing Revenue Management at the same time, you will need to upgrade to Advantage Database Server. Contact your Value Added Reseller for more information.

MPIC System Requirements

Hardware requirements

CPU (Processor)	Equivalent of Intel Quad Core Xeon 1.6GHz
RAM (Memory)	8GB
Storage Array Type	RAID-1
Network Card (NIC)	1Gbps (cannot be a teamed network card)
Hard Drive	At least 30GB

Software requirements

MPIC must be installed at the same location as your SQL server. It does not need to be installed on any of your workstations. Nor does it have to be dedicated.

You may use a virtual server with MPIC.

With Practice Partner 11.2 and newer

- Windows Server 2012 and R2 (Microsoft support end of life is October 10, 2023)
- Windows Server 2016 Standard, Datacenter, Essentials
- Windows Server 2019 Standard
- Lytec 2014 SP1 or newer
- SQL Server Express 2017 or 2019*

*SQL server express is NOT installed with MPIC. For Lytec, MPIC will use the version of SQL Server Express or Standard that Lytec is using.

For SQL Server 2019 on Windows

SQL Server 2019 is NOT supported on Windows 8.1 or Windows Server 2012 or Windows Server 2012 R2.

For information on which versions of SQL Server are supported on versions of Windows Server and Windows, see <https://learn.microsoft.com/en-us/troubleshoot/sql/general/use-sql-server-in-windows>

Firewall settings

An installed firewall or router may block some of the needed Platform Services APIs.

The following must all be allowed:

identity.emdscloud.com	eligibilitybenefits.emdscloud.com
licensing.emdscloud.com	ppsmobile.emds.com
terminology.emdscloud.com	api.emdscloud.com

In addition, the two below are required if you are using CGM CONNECTION:

<https://cnx.cgmus.com/>

<https://cnx-mh.cgmus.com/>

Anti-Virus Software

An anti-virus solution should be installed with the CGM-recommended configurations. The application folder and client folder must be excluded from real-time/on-access scanning. CGM recommends scheduled scans when users are not in the system. Ensure that exclusions are set properly. CGM recommends turning off Windows Defender and other anti-virus programs during the CGM LYTEC Installation, and with Revenue Management (RM) installation and updates; otherwise, it may interact with files and some files may not get installed. Any anti-virus solution that does not allow for exclusions should not be installed. If asked by Support, you must be able to show the exclusions.

Important New Backup Information

IMPORTANT: It is highly recommended that, after entering your Customer Account ID and successfully registering your software, you make a backup of Lytec SharedData and store it safely offsite. In this way, in case your server fails or you have to set up a new server, you can restore from that SharedData backup. Registration of CGM LYTEC is tied to the server, so if you do not have your Lytec SharedData backed up, you will need to contact CGM Support to get your registration deactivated so it can be entered again. Perform this onetime backup in addition to the daily practice files backup, which should be performed and stored offsite. Under the new licensing model, the software may only be installed on one server. If the software is installed on additional servers, an error message will appear informing you that the customer is already registered and it will not be functional.

To back up your SharedData:

1. Close any open practices in Lytec.
2. Click the "L" in the top left corner of the Lytec screen.

3. Click Backup and Restore Database.

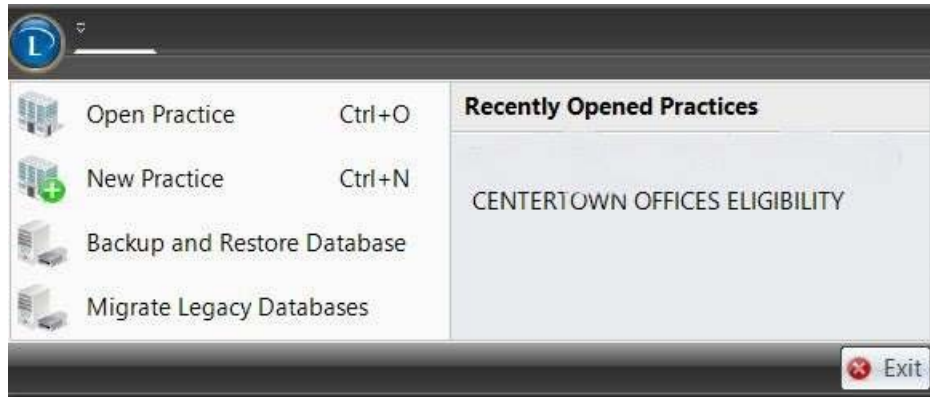


Figure 1. CGM LYTEC screen

The Confirm SQL SysAdmin screen opens.



Figure 2. Confirm SQL SysAdmin screen

4. Enter your credentials and click the OK button. The Manage Backups screen opens.

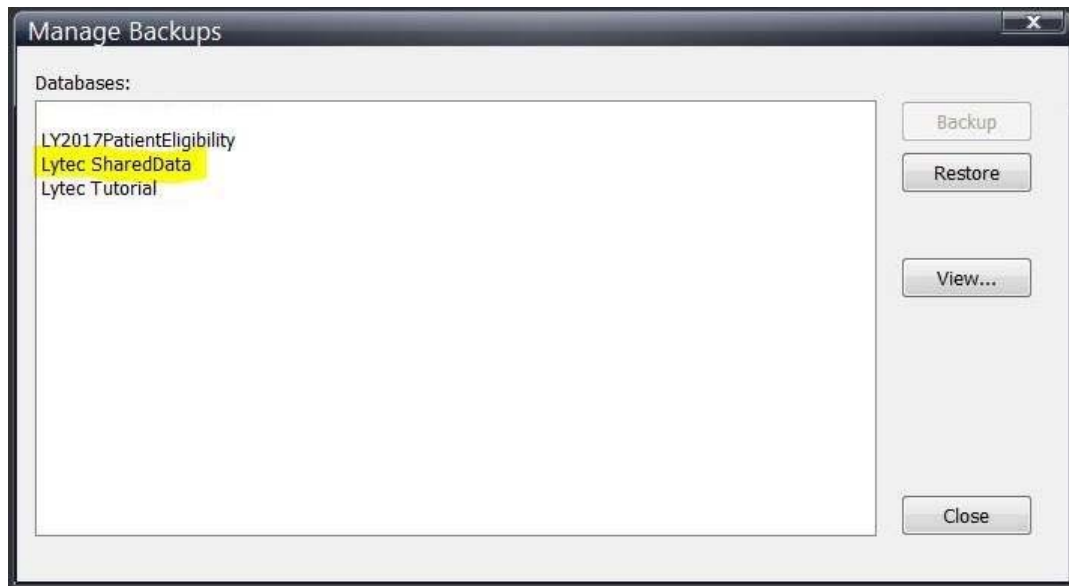


Figure 3. Manage Backups screen

5. Select Lytec SharedData and click the Backup button.
6. Follow the remaining prompts to create the backup.