

Medisoft Reports Professional Installation Guide

January 2021



eMDs

medisoft

Copyright notice

Copyright © 2021 eMDs, Inc. All Rights Reserved.

Use of this documentation and related software is governed by a license agreement and this document is incorporated into and is made part of the license agreement. This documentation and related software contain confidential, proprietary, and trade secret information of eMDs, Inc., and is protected under United States and international copyright and other intellectual property laws. Use, disclosure, reproduction, modification, distribution, or storage in a retrieval system in any form or by any means is prohibited without the prior express written permission of eMDs, Inc. This documentation and related software is subject to change without notice.

Publication date

January 2021

Product

Medisoft, 25

Corporate address

eMDs, Inc.
10901 Stonelake Blvd.
Austin, Texas 78759
512-257-5200

Table of Contents

Chapter 1 - Installation Instructions for Medisoft Reports Professional	1
Index	5

Chapter 1 - Installation Instructions for Medisoft Reports Professional

1. Download the ISO for Reports Professional from the Medisoft and Medisoft Clinical Download Links page in Support Center.
2. Open the ISO and launch autorun.exe. The Installation screen appears.
3. Click **Install Reports Professional**. The Welcome to Reports Professional Setup screen appears.

If you are installing on Windows 8, the User Account Control screen may appear. Click **Allow**.

4. Click the **Next** button. The End User License Agreement screen appears.

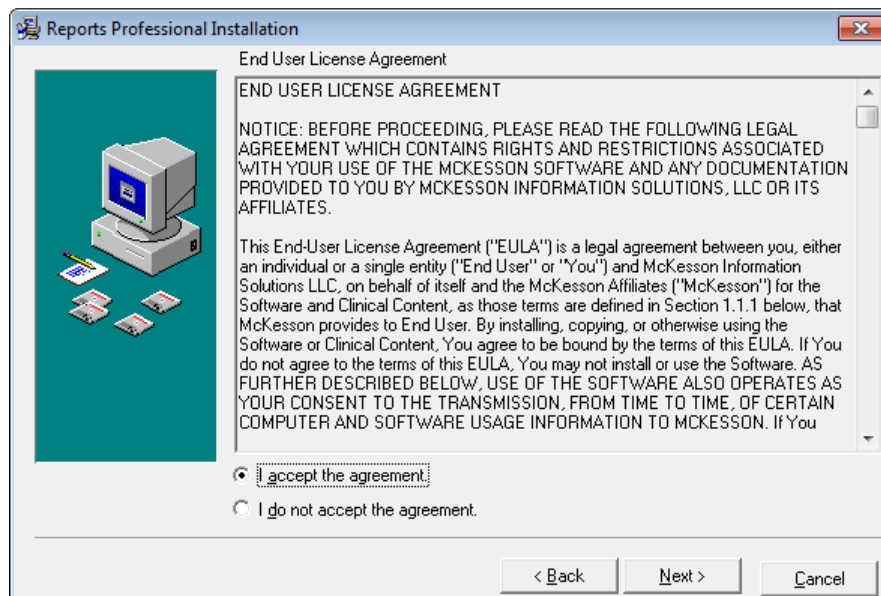


Figure 1. End User License Agreement screen

5. Click the **I accept the agreement** button.
6. Click the **Next** button. The Select Components screen appears.

7. Select products to install in addition to the Medisoft Reports Professional feature.

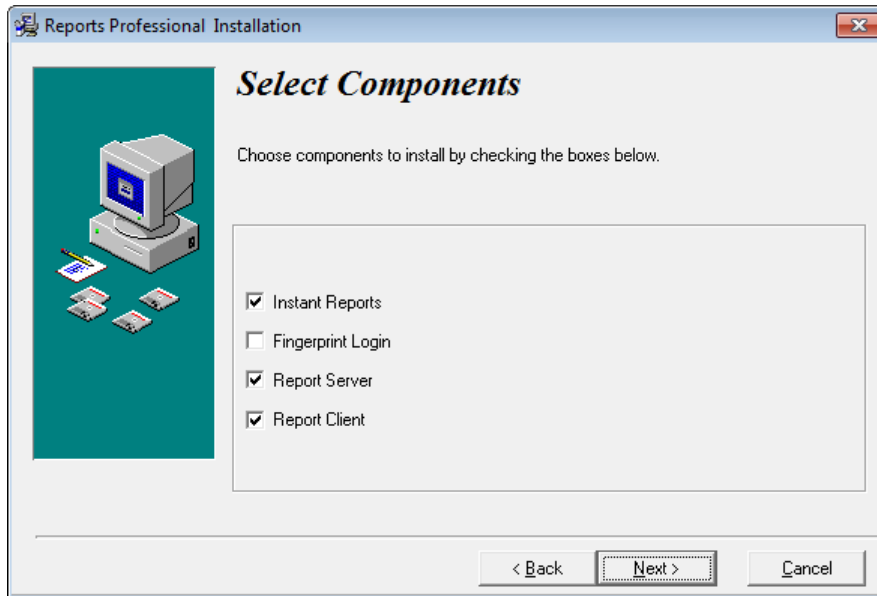


Figure 2. Select Components screen

Component	Description
Instant Reports	Select this check box to install Instant Reports, a reporting tool that produces reports using data fields in Medisoft that users select on-the-fly.
Fingerprint Login	Select this check box to install the Fingerprint Login software, which interfaces to a fingerprint reader device to control access to the software. Contact Medisoft Sales at (800) 333-4747 or your local Value-Added-Reseller for information on purchasing a fingerprint sensor.
Report Server	Select this check box to install Report Server. Report Server allows you to schedule and deliver reports automatically on your network. With Report Server, you can define, schedule, and deliver reports.
Report Client	Select this check box to install the Report Client. The Report Client works with the Report Server and allows users to view and print reports produced by the Report Server.

8. Click the **Next** button. The Ready to Install screen appears.
9. Click the **Next** button.

10. The Installing screen appears and tracks the progress of the installation. Once the installation is complete, the Installation Completed screen appears.

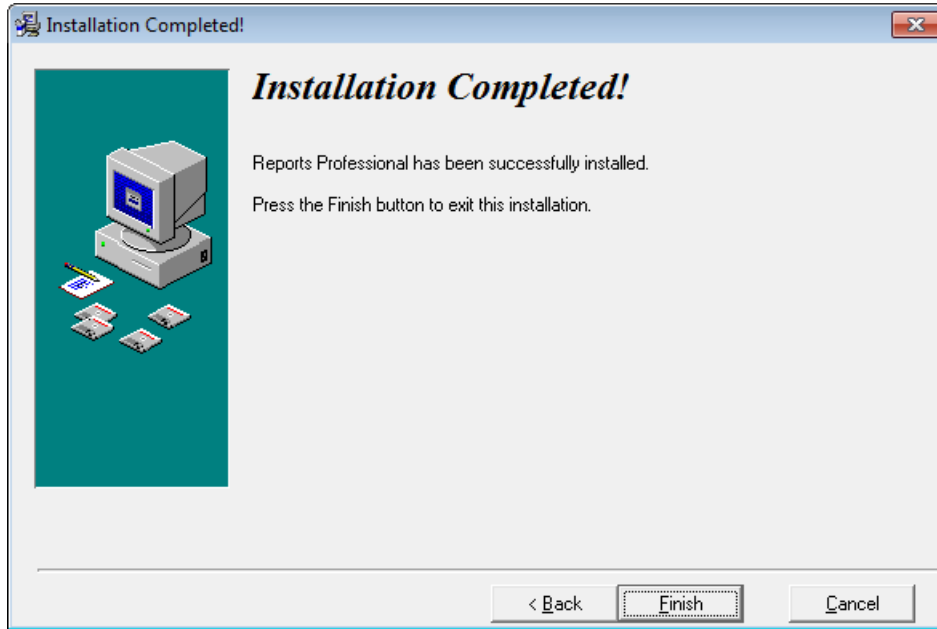


Figure 3. Installation Completed screen

11. Click the **Finish** button.

Index

C

- components
 - Fingerprint Login [2](#)
 - Instant Reports [2](#)
 - Report Client [2](#)
 - Report Server [2](#)

E

- End User License Agreement screen [1](#)

F

- Fingerprint Login [2](#)

I

- Installation Completed screen [3](#)
- Instant Reports [2](#)

R

- Ready to Install screen [2](#)
- Report Client [2](#)
- Report Server [2](#)

S

- screens
 - End User License Agreement [1](#)
 - Installation Completed [3](#)
 - Ready to Install [2](#)
 - Select Components [1](#)
 - Welcome to Reports Professional Setup [1](#)
- Select Components screen [1](#)

U

- User Account Control [1](#)

W

- Welcome to Reports Professional Setup screen [1](#)